

Pràctica 4. Circuit Dynamics

Various different responses of linear circuits.

Pere Palà

October 2011

In this lab session we are going to investigate the dynamic behavior of linear circuits. Specifically, we will investigate an active second order circuit that exhibits different responses depending on a circuit parameter.

ATTENTION: Please remember to work out individually those paragraphs looking as this one. This previous work has to be uploaded to the Atenea platform before 0:00 of the lab session day.

Remember also to bring all the required tools for a hardware laboratory session (protoboard, cables, etc).

1 Circuit dynamics

In this laboratory session we will investigate the circuit depicted below.

Previous Work 1. Find the transfer function $H(s) = V_O(s)/V_G(s)$ of the circuit. Indicate which values of α make the circuit stable, marginally stable and unstable.

Previous Work 2. Indicate which values of α give real, complex and purely imaginary poles of $H(s)$. Relate these results with the stability of the circuit

Previous Work 3. Indicate which values of α give real, complex and purely imaginary poles of $H(s)$.

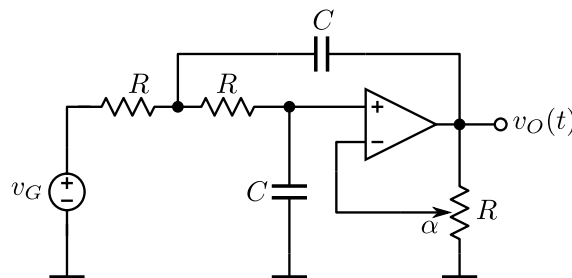


Figure 1: The circuit.

Previous Work 4. Find the step response, i.e. find $v_o(t)$ for $v_i(t) = u(t)$ when $\alpha = 1/2$. Make a sketch of the $v_o(t)$ indicating the most significant features of the waveform. Find as many ways as possible to validate the results.

Previous Work 5. Demonstrate that the time constant τ of an exponential waveform such as $Ae^{-t/\tau} + B$ may be found from two points of the waveform (t_1, v_1) and (t_2, v_2) and from the final value v_∞ by the expression

$$\tau = \frac{t_2 - t_1}{\ln \frac{v_1 - v_\infty}{v_2 - v_\infty}} \quad (1)$$

2 Laboratory work

Task 1. Build the circuit on your prototyping board with $R = 10 \text{ k}\Omega$ and $C = 10 \text{ nF}$. The input signal should be a square wave between 0 and 1 V and half-period greater than 5τ .

Task 2. Use the oscilloscope to view simultaneously the input and the output signal with different values of α that make the circuit stable. Consider specifically the case you worked out in your *previous work*.

Task 3. Experiment what happens when you lower the input frequency. Does the output signal look like a square wave? What happens when you change the input signal to triangular or sinusoidal?

Task 4. Make $v_i = 0$ and observe $v_o(t)$ for values of α that make the circuit unstable. Measure the oscillation frequency when α gives purely imaginary poles. Investigate what happens when you further decrease α .